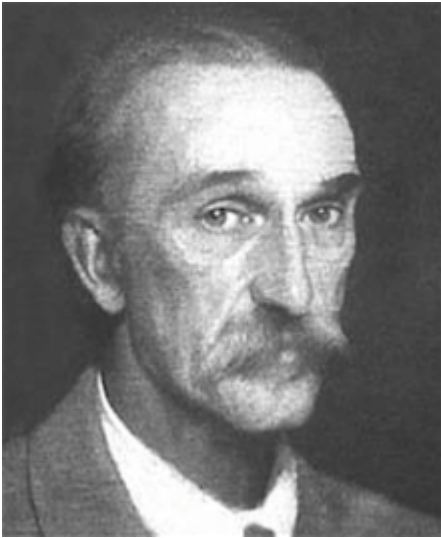


Wilson, Henry 1864 - 1934



Henry Wilson [also known as Harry Wilson, and as H. Wilson] was born in West Derby, near Liverpool, England, on 12 March 1864. After studying at Kidderminster School of Art, Westminster School of Art, and the Royal College of Art in London, he trained as an architect with John Oldrid Scott (1841-1913), [John Belcher](#) (1841-1913), from c.1885, [Arthur Beresford Pite](#) (1864-1934), and, from 1888, [John Dando Sedding](#) (1838-1891) to whom he was chief assistant. He subsequently continued Sedding's practice following his death in 1891.

In addition to his work as an architect, Wilson was also an art metalworker, and designer of jewellery and wallpaper. He taught metalwork at the Royal College of Art and at Central School of Arts and Crafts in London from 1901. He was Editor of the *Architectural Review* from 1896 to 1901; President of the Arts & Crafts Exhibition Society from 1915 to 1922; and Master of the Art Workers Guild in 1927. He died in Menton, France on 7 March 1934.

Worked in

UK

Works

Architectural projects by Wilson included completion of Holy Trinity church, Sloane Street, London designed by J. D. Sedding (c.1890-c.1900); chapel and library at Welbeck Abbey in the Dukeries in North Nottinghamshire (1890-96); Public Library, Ladbrooke Grove, London (1890-91); completion Church of Our Most Holy Redeemer in Clerkenwell, London designed by J. D. Sedding (1892-95); completion of St Peter's Church, Ealing, London designed by J. D. Sedding (1892); St. Peter's Church, Mount Park Road, Ealing, London (1892); Tower of St.

Clement's Church, St. Clement's Road, Boscombe, Devon (1893, designed by J. D. Sedding, 1871); alterations to the chapel at Douglas Castle near Douglas, Lanarkshire, Scotland (1894); lychgate and vestry at Holy Trinity Church, Ilfracombe, Devon (1894); restoration of Church of St Mary the Virgin, Norton Sub Hamdon, Somerset (1894, 1904); Lychgate and vestry, Holy Trinity Church, Ilfracombe, Devon (c.1895); Tower of Holy Redeemer Church, Exmouth Street, Finsbury, London (c.1895, designed by J. D. Sedding, 1887); Furnishing and decoration of St. Augustin's Church, Archway Road, Hornsey, London (c.1895, designed by J. D. Sedding, 1885); North chapel, St. Martin's Church, Brabyn's Row, Marple, Cheshire (1895-96); St Mark's Church, Brithdir, Wales (1895-98); additions to St Bartholomew's Church, Brighton including tabernacle door, altar and pulpit; (1897-1911); North transept clock case for Gloucester Cathedral (1903); Chancel, St. Mary's Church, Norton-sub-Hamdon, Somerset (1905); Pulpit, Ripon Cathedral, Ripon, Yorkshire (1913); and the Elphinstone Tomb, King's College, University of Aberdeen (cast 1914, erected 1925).

Bibliography

Armstrong, Barrie and Armstrong, Wendy. *The Arts and Crafts movement in the North East of England: a handbook*. Wetherby, England: Oblong Creative Ltd., 2013

Armstrong, Barrie and Armstrong, Wendy. *The Arts and Crafts movement in the North West of England: a handbook*. Wetherby, England: Oblong Creative Ltd., 2006.

Button, Roger. *Arts and Crafts Churches of Great Britain: Architects, Craftsmen and Patrons..* Settle, North Yorkshire: 2QT Ltd. (Publishing) Ltd., 2020

Directory of British Architects 1834-1914. Compiled by Antonia Brodie, et al. Volume 2: L-Z. London; New York: British Architectural Library, Royal Institute of British Architects/Continuum, 2001

Gray, A. Stuart. *Edwardian architecture: a biographical dictionary*. London: Gerald Duckworth & Co., Ltd., 1985

Hamilton, Alec. *Arts & Crafts Churches*. London: Lund Humphries, 2020

Lambourne, Lionel. *Utopian Craftsmen. The Arts and Crafts Movement from the Cotswolds to Chicago*. London: Astragal Books, 1980

Manton, Cyndy Nina. Henry Wilson, 1864–1934: his work and influence. Ph.D. thesis, University of Brighton, 1985

Morton, Cyndy. Henry Wilson: practical idealist. Cambridge: The Lutterworth Press, 2009 [Chapters: 'Perhaps the greatest artist of the lot'; Dirst influences; J. D. Sedding and his impact; Lifev after Sedding; Creative transition; Focus on the metalworking arts; The all-round artist; Learning by living; The public face of the Arts and Crafts; Arts and Crafts in the modern world; 'The arch individualist']

'Obituary'. RIBA Journal vol. 41, 24 March 1934 p. 539

'Obituary'. RIBA Journal vol. 41, 24 April 1934 pp. 588-589

Simplicity or Splendour. Arts and Crafts Living. Objects from the Cheltenham Collection. Edited by Annette Carruthers and Mary Greensted. London: Cheltenham Art Gallery and Museums in Association with Lund Humphries Publishers, 1999

Taylor, Nicholas. 'Byzantium in Brighton'. Architectural Review March 1966 pp.274-277 [St Bartholomew's Church, Brighton, Sussex]. Architectural Review March 1966 pp.274-277 [Reprinted in Edwardian Architecture and its Origins. Edited by Alastair Service. London: The Architectural Press Limited, 1975 pp. 280-288]

Thomas, John. 'The Elphinstone monument at King's College Aberdeen. Its construction in the sixteenth century and reconstruction (1909-31) by Henry Wilson'. Aberdeen University Review, vol. 54, 4, No. 188 Autumn 1992 pp. 315-333.

Wilson, Henry. Silverwork and Jewellery. London: John Hogg, 1912

Wilson, Henry. 'Art and religion'. Architectural Review vol. 6, June-December 1899 pp. 276-278

Links

- Fiona MacCarthy, 'Wilson, Henry (1864–1934)', Oxford Dictionary of National Biography, Oxford University Press, 2004; online edn, May 2012 [Subscription service] <http://www.oxforddnb.com/view/article/38556>
- Margaret Richardson. Henry Wilson. rove Art Online. Oxford Art Online [Subscription service] <https://doi.org/10.1093/gao/9781884446054.article.T091741>
- Wikipedia https://en.wikipedia.org/wiki/Henry_Wilson_%28architect_and_designer%29

- Mapping the Practice and Profession of Architecture in Britain & Ireland 1851-1951

https://sculpture.gla.ac.uk/mapping/public/view/person.php?id=msib4_1245166168&search

- The Work of Henry Wilson at St. James's Church in Somerton, Oxfordshire

http://somertonoxon.co.uk/?page_id=370

- The Victorian Web <https://victorianweb.org/art/design/wilson/index.html>

- Art Institute of Chicago <https://www.artic.edu/artworks/159135/diana-diadem>

- Dictionary of Scottish Architects 1660-1980

http://www.scottisharchitects.org.uk/architect_full.php?id=204091

- The National Archives

<http://www.nationalarchives.gov.uk/nra/searches/subjectView.asp?ID=P36137>

- Sussex Parish Churches [Scroll down to name]

<https://sussexparishchurches.org/architectsandartistswxyz/>

- Artnet <http://www.artnet.com/artists/henry-wilson/>

- ART UK <https://artuk.org/discover/artists/wilson-henry-18641934>

- National Art Library Catalogue <https://nal->

[vam.on.worldcat.org/search?sortKey=LIBRARY&databaseList=&queryString=%22Henry%22](http://www.worldcat.org/search?sortKey=LIBRARY&databaseList=&queryString=%22Henry%22)

- Historic England - St Peter, Mount Park Road, Ealing, London

<https://historicengland.org.uk/services-skills/grants/visit/st-peter-mount-park-road-w5-2ru/>

- Historic England - Memorial Cross at St. Andrews Churchyard, Much Hadham, Hertfordshire <https://historicengland.org.uk/listing/the-list/list-entry/1212066>

- Historic England - Church of St. Bartholomew, Brighton, Sussex

<https://historicengland.org.uk/listing/the-list/list-entry/1379913>

- Historic England - lychgate, Parish Church of Holy Trinity, Ilfracombe, Devon

<https://historicengland.org.uk/listing/the-list/list-entry/1281882>

- Historic England - Church of St. Augustine of Canterbury, Haringey, London

<https://historicengland.org.uk/listing/the-list/list-entry/1358860>

- Historic England - War Memorial, Martock, Somerset

<https://historicengland.org.uk/listing/the-list/list-entry/1266016>

- Historic England - Parish Church of Holy Trinity, Ilfracombe, Devon

<https://historicengland.org.uk/listing/the-list/list-entry/1208207>

- Historic England - Church of Our Most Holy Redeemer, Clergy House, Campanile and Parish Hall, Islington, London <https://historicengland.org.uk/listing/the-list/list-entry/1209007>

- Historic England - Norton Sub Hamdon, Somerset

<https://historicengland.org.uk/listing/the-list/list-entry/1253811>

- Historic England - Church of St. Clement, Bournemouth, Hampshire

<https://historicengland.org.uk/listing/the-list/list-entry/1324751>

- Historic England - Welbeck Abbey and attached picture gallery, chapel and library, Welbeck, Nottinghamshire <https://historicengland.org.uk/listing/the->

[list/list-entry/1224867](#)

- British Listed Buildings <https://britishlistedbuildings.co.uk/site-search/?q=Henry%20Wilson>