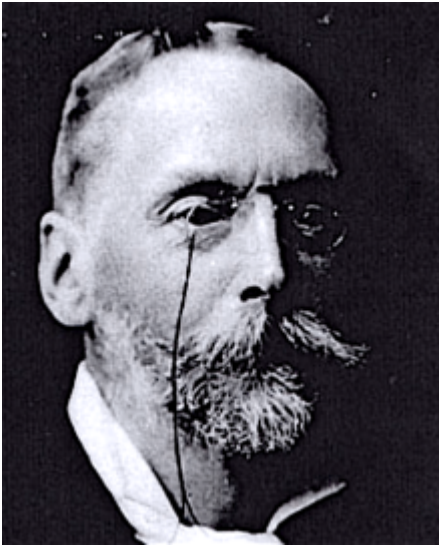


## Nevill, Ralph 1845 - 1917



Ralph Nevill was born in Tottenham, Middlesex, England on 23 April 1845. He was articled to Sir George Gilbert Scott (1811-1878) from 1863 to c.1868 and remained in his office as a salaried clerk for a further two years. In 1870 he commenced practice as an independent architect in Godalming, Surrey. He later also opened an office in London.

Architectural projects by Nevill included: additions to Pinewood, Brook Road, Wormley (1870); alterations to the Church of St Peter and St Paul, Godalming in 1877-79, additions to Rake Manor in Milford (1882) and Snowdenham Hall in Bramley (1886) for John Courage of the Brewery family.

Nevill was elected an Associate of the Royal Institute of British Architects (ARIBA) in 1870 and a Fellow of the Royal Institute of British Architects (FRIBA) in 1876. He was the author of *Old Cottage and Domestic Architecture of South-West Surrey* (1899). He died in Guildford, Surrey on 10 January 1917.

Worked in

UK

Bibliography

Directory of British Architects 1834-1914. Compiled by Antonia Brodie, et al. Volume 2: L-Z. London; New York: British Architectural Library, Royal Institute of British Architects/Continuum, 2001

'Obituary'. Royal Institute of British Architects Journal vol. 24, 1916-17 p. 129

'Obituary'. Royal Institute of British Architects Journal vol. 25, 1917-18 p. 252

#### Links

- Godalming Museum <https://www.godalmingmuseum.org.uk/?page=ralph-nevill>