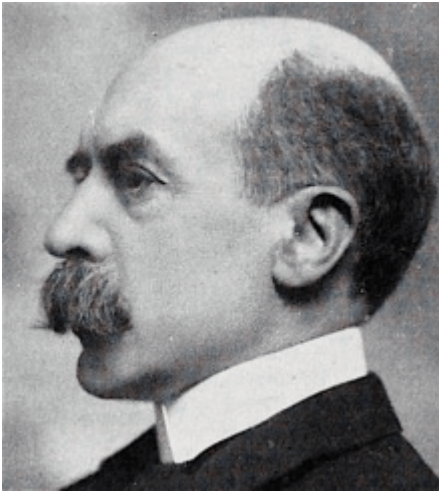


Mountford, Edward William 1855 - 1908



Edward William Mountford [also known as E.W. Mountford] was born in Shipston-on-Stour, Worcestershire, England on 22 September 1855 and was articled to William Gilbee Habershon (1818?-1891) and Alfred Robert Pite (1832-1911) in London from 1870 to 1874. In 1875-76 he was Clerk of Works to St. Stephen's Church in Houslow. He then worked in the offices George Elkington (1823?-1897) and and George Elkington (1851-1939) from 1876; and John Giles (?-1900) and Albert Edward Gough (1842?-1908) from 1879.

Mountford commenced independent practice as an architect in London in 1880. In c.1890 he formed a partnership with Herbert Duncan Appleton [also known as Herbert Duncan Searles-Wood] (1853-1936). Between the late 1890s and c.1907 he was in partnership with [Thomas Geoffry Lucas](#) (1872-1947) in the London-based architectural firm [E.W. Mountford and Geoffry Lucas](#). From April 1907 he was in partnership with Frederick Dare Clapham (1873-1914). The partnership was short-lived as Mountford died less than a year later.

Mountford was elected an Associate of the Royal Institute of British Architects (ARIBA) in 1881 and a Fellow of the Royal Institute of British Architects (FRIBA) in 1890. He was President of the Architectural Association in 1893-95. He died in London on 7 February 1908. His address at the time of his death was 11 Craven Hill, Bayswater, Middlesex [now London].

A biographical file on Edward William Mountford is available on request from the Enquiry Desk, Royal Institute of British Architects Library, London

Worked in
UK
Works

St Paul's Church, Forest Hill, London, with Appleton (1882); Hospital in Stratford-on-Avon (1883); Baptist Chapel, Battersea, London (1884); Cottage Hospital, Whitchurch, Shropshire (1885); Ellen Badger Hospital, Shipston-on-Stour, Warwickshire (1886); a clubhouse in Shipston-on-Stour (1888); St Andrew, Wandsworth, 1888); Battersea Central Library (1889-90); Public Library, off Lavender Hill, Battersea, London (1890); Sheffield Town Hall (1890-99); St Andrew's, Earlsfield, London 1890-1902); Battersea Polytechnic Institute, London (1890-91); Town Hall, Pinstone Street, Sheffield, Yorkshire (1890-97); Town Hall, Lavender Hill, Battersea, London (1892-93); St Olave's School, Tooley Street, Bermondsey, London (1893); City Polytechnic in Clerkenwell (1893); Northampton Institute, St. John Street, Clerkenwell, London (1896); Extension to The William Brown Library and Museum, Liverpool (1896-1901); St. Michael, Smithfield, London (c.1898); Technical Schools, William Brown Street, Liverpool (1898-1902); Hall d'attente, Guernsey (c.1899); Town Hall, Hitchin, Hertfordshire (1900-01); Central Criminal Court, Old Bailey in London (1900-07); Booth's Distillery office building, Cow Cross Street and Clerkenwell Green, London (1901); New Sessions House for the Corporation of London (1901); Church of St. Michael, Wandsworth, London (1901); Munstead Grange and Munstead Lodge, Godalming, Surrey (c.1902-04); Willett's office building and flats, 34 Sloane Square, Chelsea, London (c.1905); Northern Insurance Company, 1 Moorgate, City of London (1906); and Town Hall, Dalton Square, Lancaster (1906-09).

Source of Images

[RIBApix](#)

[British Listed Buildings](#)

Bibliography

Clapham, F. Dare. 'The Late Edward W. Mountford, F.R.I.B.A.'. *Architectural Review* vol. 23, no. 136, March 1908 pp. 161-162

Directory of British Architects 1834-1914. Compiled by Antonia Brodie, et al. Volume 2: L-Z. London; New York: British Architectural Library, Royal Institute of British Architects/Continuum, 2001

Gray, A. Stuart. *Edwardian architecture: a biographical dictionary*. London: Gerald Duckworth & Co., Ltd., 1985

'Obituary'. *The Builder* vol. 94, 15 February 1908 pp. 170, 190

'Obituary'. Royal Institute of British Architects Journal vol. 15, 22 February 1908 pp. 274-275

'The new Sessions House for the City of London'. [Architect: Edward W. Mountford] Architectural Review vol. 21, 1907, pp. 136-152.

'The new Sessions House for the City of London: winning design: Edward W. Mountford'. Architectural Review vol. 8, July 1900 pp. 2-14

'Northampton Institute, Clerkenwell' [Architect: E. W. Mountford]. The Builder 5 April 1893 p. 288 + plates

Links

- Colin Cunningham, 'Mountford, Edward William (1855–1908)', Oxford Dictionary of National Biography, Oxford University Press, 2004 [Subscription service]
<http://www.oxforddnb.com/view/article/35135>
- Victorian Web - work by E. W. Mountford
<https://victorianweb.org/art/architecture/mountford/index.html>
- Archiseek - work by E. W. Mountford <https://www.archiseek.com/tag/ew-mountford/>
- Find a Grave <https://www.findagrave.com/memorial/38087425/edward-william-mountford>
- Dictionary of Scottish Architects 1660-1980
http://www.scottisharchitects.org.uk/architect_full.php?id=204064
- Colin Cunningham. E. W. Mountford. Grove Art Online. Oxford Art Online [Subscription service]
<http://www.oxfordartonline.com/subscriber/article/grove/art/T060038?q=mountford&search>
- AJ Buildings Library - Lancaster Town Hall (1909) by E. W Mountford & F. Dare Clapham <https://www.ajbuildingslibrary.co.uk/projects/display/id/2719>
- Historic England - Church of All Saints, Wandsworth, London
<https://historicengland.org.uk/listing/the-list/list-entry/1357684>
- Historic England - Sheffield Town Hall <https://historicengland.org.uk/services-skills/education/educational-images/sheffield-town-hall-pinstone-street-sheffield-9972>
- Historic England - Former Library to Polytechnic Institute
<https://historicengland.org.uk/listing/the-list/list-entry/1065549>
- Historic England - College of Technology and Museum Extension, Liverpool
<https://historicengland.org.uk/listing/the-list/list-entry/1205724>
- Historic England - Church of St. Michael and All Angels, Wandsworth, London
<https://historicengland.org.uk/listing/the-list/list-entry/1357688>
- Historic England - Former Battersea Polytechnic Institute
<https://historicengland.org.uk/listing/the-list/list-entry/1357653>

- Historic England - Town Hall, Hitchin, Hertfordshire

<https://historicengland.org.uk/listing/the-list/list-entry/1394494>

- British Listed Buildings - 13 listed buildings by E. W. Mountford

<https://britishlistedbuildings.co.uk/site-search/?q=%22E%20W%20Mountford%22>

- Wikipedia https://en.wikipedia.org/wiki/Edward_William_Mountford

- RIBApix

[https://www.ribapix.com/search?adv=false&cid=0&mid=0&vid=0&q=Edward%20William%](https://www.ribapix.com/search?adv=false&cid=0&mid=0&vid=0&q=Edward%20William%20Mountford)