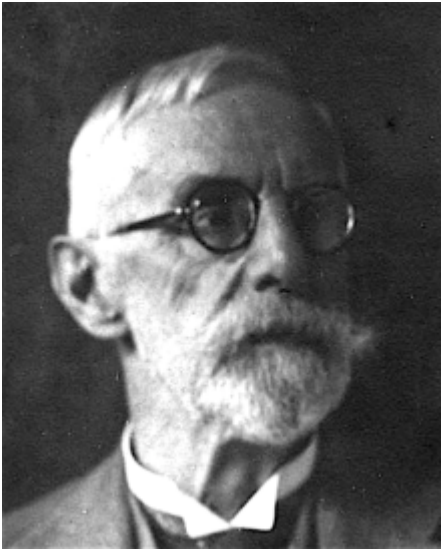


## Johns, Edwin Thomas 1862 - 1947



Edwin Thomas Johns was born in Ipswich, Suffolk, England on 26 February 1862. After attending Ipswich School of Art he was articled to James Butterworth (1931-1916) at 6 Museum Street, Ipswich from 1877 to 1881 and when Butterworth retired, completed his articles with [William Eade](#) (1841-1927) in Ipswich. He remained with Eade as his assistant until 1887. He then worked as an assistant to Brightwen Binyon (1846-1905) from 1887 to 1889.

Johns commenced independent practice as an architect in Ipswich in 1889 and from 1889 he was in partnership with Eade as Eade & Johns. Following Eade's retirement, Johns practised alone until 1921 when he formed a partnership with his nephew, Martin Johns Slater (1892-1990) as Johns & Slater. They remained in partnership until 1933 when Johns retired

In 1903 Johns was appointed Surveyor to Ipswich Borough Education Committee. He was elected a Licentiate of the Royal Institute of British architects (LRIBA) in 1911 and was made a Fellow of the Royal Institute of British Architects (FRIBA) in 1925. He was at one time President of the Suffolk Association of Architects.

In addition to his work as an architect, Johns was also a painter and a member of the Ipswich Art Club with whom he frequently exhibited. He also exhibited at the Royal Academy in London from 1910 to 1937.

Johns' address was given as Tower Chambers, Tower Street, Ipswich in 1911; 8 Lower Brook Street, Ipswich in 1911 and 1939. He died in Ipswich in on 11 November 1947

A biographical file on Edwin Thomas Johns is available on request at the Enquiry Desk, Royal Institute of British Architects, London

Worked in

UK

Bibliography

Directory of British Architects 1834-1914. Compiled by Antonia Brodie, et al. Volume 1: A-K. London; New York: British Architectural Library, Royal Institute of British Architects/Continuum, 2001

Fleck, Hans F. 'Edwin Thomas Johns, FRIBA, 1862-1947'. *ERA no. 45, August 1977 pp. 12-13.*

'Obituary'. *The Builder* vol. 173, 21 November 1947 p. 578

'Obituary'. *Royal Institute of British Architects Journal* vol. 55, January 1948 p. 129

Links

- Suffolk Artists <https://suffolkartists.co.uk/index.cgi?choice=painter&pid=362>
- ART UK <https://artuk.org/discover/artworks/sun-301687>
- ART UK <https://artuk.org/discover/artists/johns-edwin-thomas-18621947>
- Artist Biographies [Subscription service]  
<https://www.artbiogs.co.uk/1/artists/johns-edwin-thomas>