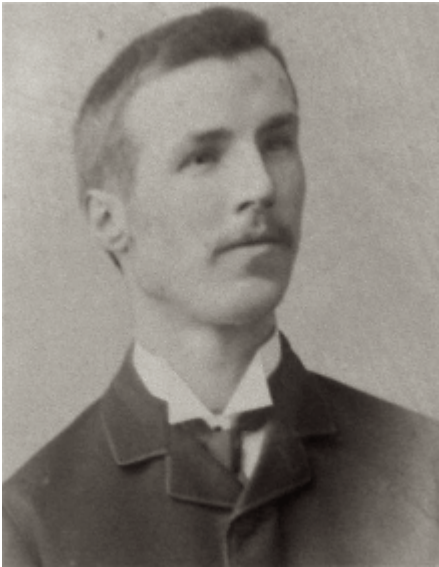


Snell, Alfred Walter Saxon 1860 - 1949



Alfred Walter Saxon Snell [also known as Alfred Saxon Snell] was born in Brompton, London, England on 1 June 1860 and was articled to his father, Henry Saxon Snell (1830-1904) in London. He also studied architecture at University College, London and at the Architectural Association Schools in London. He commenced independent practice in 1882 and was in partnership with his brother, Harry Saxon Snell (1854-1886) in London from 1882 to 1886 and with his father from 1882 to 1890. From 1921 to 1941 he was in partnership with Rees Phillips (1890-1955) in London as Alfred Saxon Snell & Phillips

He was the author of a number of publications on hospital architecture. He was elected an Associate of the Royal Institute of British Architects (ARIBA) in 1882 and a Fellow of the Royal Institute of British Architects (FRIBA) in 1891.

His address was given as Aperfield, Finchley New Road, Hampstead, London in 1881; Hillcotte, Netherall Terrace, South Hampstead, London in 1882; 22 Southampton Buildings, London and 1 Park Road, Wimbledon, Surrey in 1890; 101 Belvedere Drive, Wimbledon, Surrey in 1911; 9 Bentick Street, Manchester Square in 1914 and 1939; and 23 St. Anne's Road, Cavendish, Reading, Berkshire in 1949. He died in Reading, Berkshire on 8 June 1949

Worked in

UK

Works

Charing Cross Hospital, London; St. Mary's Hospital, Plaistow, E.; Male Lock Hospital, London; Nurses' Homes, Samaritan Hospital and Holborn Union Infirmary, Highgate; Fulham Infirmary additions; Southall Schools, Infirmary, etc.; Willesden Parish Infirmary and Workhouse; St. Marylebone Workhouse (reconstruction); nurses' homes at Southwark Union Infirmary and Fulham Parish Infirmary ; St. Marylebone Public Baths; Plaistow Public Baths; swimming baths at St. Paul's Girls' School and Cheltenham Ladies' Coll.; Caxton Convalescent Home, Limpsfield; Friendly Societies' Home, Herne Bay; Railwayman's Home, Herne Bay; Watford Union Infirmary and Nurses' Home; Uxbridge Union Infirmary and Nurses' Home

Bibliography

Directory of British Architects 1834-1914. Compiled by Antonia Brodie, et al. Volume 2: L-Z. London; New York: British Architectural Library, Royal Institute of British Architects/Continuum, 2001

Links

- archiseek <https://www.archiseek.com/tag/alfred-saxon-snell/>
- Historic England -Railings, gatepiers and gates at Elliott House, Canterbury, Kent <https://historicengland.org.uk/listing/the-list/list-entry/1119678>
- Historic England - 12 Belvedere Drive, Merton, London <https://historicengland.org.uk/listing/the-list/list-entry/1358014>
- Historic England - Nurse's Home on North side of Lochaline Steet, London <https://historicengland.org.uk/listing/the-list/list-entry/1286859>
- Historic England - Lodge, gate, piers and railings ti St. Charles' Hospital, Kensington and Chelsea <https://historicengland.org.uk/listing/the-list/list-entry/1235252>
- Historic England - St. Charles' Hospital Nurses' Home, Kensington and Chelsea <https://historicengland.org.uk/listing/the-list/list-entry/1265144>
- Historic England - Elliott House, Canterbury, Kent <https://historicengland.org.uk/listing/the-list/list-entry/1119677>