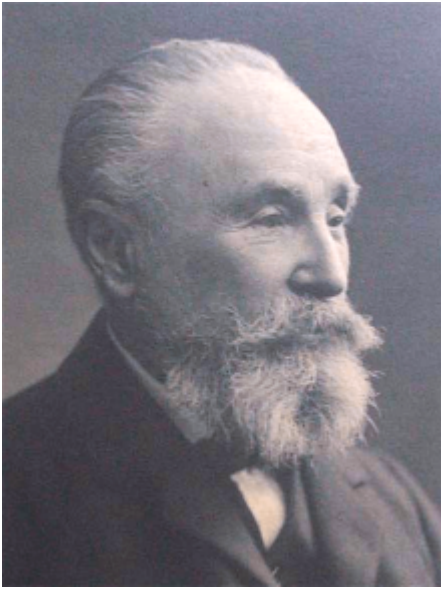


Fuller, James Franklin 1835 - 1925



James Franklin Fuller was born in Derryquin, County Kerry, Ireland on 16 August 1835. In 1850 he went to England where he worked for a year with the mechanical engineering firm Summers, Day and Baldock of Southampton. He was then articled to Frederick William Porter (1821-1901) in London. After leaving Porter he worked in the offices of several architects including William Burges (1827-1881) and Henry Dawson in London, Alfred Waterhouse (1830-1905) in Manchester and Matthew Ellison Hadfield (1867-1949) in Sheffield. In 1861 he returned to Co. Kerry and subsequently established a practice at 179 Great Brunswick Street, Dublin. He was Architect to the Church Representative Body, to Benchers of King's Inns, to St Patrick's Cathedral in Dublin, and to the National Board of Education, Ireland. He was elected a Fellow of the Royal Institute of British Architects (FRIBA) in 1872 and a Member of the Royal Institute of the Architects of Ireland (MRIAI) in 1883.

In addition to his work as an architect, Fuller was also a writer and the author of several novels. He died at his house on Eglinton Road, Dublin, on 8 December 1924.

Worked in
Ireland
Works

His architectural projects included Kylemore Castle in Connemara, County Galway (1868-84); the rebuilding of Ashford Castle, near Cong, County Galway (1875-81);

the renovation of Farmleigh House at Castleknock, Dublin (1881-84); Kenmare Hotel in Kenmare, County Kerry, for the Great Southern and Western Railway (1894); and Parknasilla Hotel in Sneem, County Kerry (1894) for the Great Southern and Western Railway; churches at Clane, Arthurstown, Killadease Rattoo, Kylemore, and elsewhere in Ireland: Lord Ardilaun's mansions at St Ann's, Dublin, and Ashford, Co. Galway; Hanistonn House, Kildare; Ballyburley House, King's Co.

For a detailed list of nearly 300 architectural projects from 1859-1917 by James Franklin Fuller, see the Dictionary of Irish Architects 1720-1940

Bibliography

Directory of British Architects 1834-1914. Compiled by Antonia Brodie, et al. Volume 1: A-K. London; New York: British Architectural Library, Royal Institute of British Architects/Continuum, 2001

Links

- Dictionary of Irish Architects 1720-1940
<https://www.dia.ie/architects/view/2043/FULLER-JAMESFRANKLIN>
- Wikipedia https://en.wikipedia.org/wiki/James_Franklin_Fuller
- Irish Architectural Archive <https://iarc.ie/exhibitions/previous-exhibitions/who-was-james-franklin-fuller/>
- Nora Ide McAuliffe. 'The forgotten legacy of James Franklin Fuller' The Irish Times 22 October 2015 <https://www.irishtimes.com/life-and-style/homes-and-property/the-forgotten-legacy-of-james-franklin-fuller-1.2400042>
- Humphrys Genealogy
<https://humphrysfamilytree.com/Blennerhassett/fuller.jff.html>
- Andrew O'Brien and Linde Lunney. James Franklin Fuller. Dictionary of Irish Biography. <https://www.dib.ie/biography/fuller-james-franklin-a3387>
- The Irish Aesthete <https://theirishaesthete.com/2014/11/03/another-world/>
- archiseek <https://www.archiseek.com/tag/j-f-fuller/>